



**TEL-TRU
MANUFACTURING CO.**

World-Class Thermometers

Thermometers • Pressure Gauges • Transmitters • Accessory Products

**Price List CTP-05
Effective 1/1/05**

CHECK-TEMP CALIBRATORS

Tel-Tru Check-Temp Calibrators are Fast, Easy-to-Use, and Accurate! The Tel-Tru Check-Temp Calibrator allows accurate verification of thermometer accuracy at the temperature point critical to the users actual application. Environmental Safety and Health Professionals, Quality Assurance Managers and HACCP Coordinators in food processing/smoking, preparing/cooking, holding/serving and cooling/storage are using the Check-Temp Calibrator to verify the accuracy of their dial and digital thermometers.

SPECIFICATIONS	CHECK-TEMP 40 M	CHECK-TEMP 140	CHECK-TEMP 160	CHECK-TEMP II M
List Price	\$565.00	\$435.00	\$435.00	\$715.00
Setpoint	40°F	140°F	160°F	40°F and 160°F
Accuracy	±0.2°F	±0.2°F	±0.2°F	±0.2°F
Stability	±0.09°F	±0.06°F	±0.06°F	±0.07°F
Heating Time	Approx. 3 minutes	Approx. 8 minutes	Approx. 10 minutes	* Approx. 3 minutes
Stem Diameters	.250", .125", .187" & .375"	Up to .150"	Up to .150"	.250", .125", .187" & .375"
Stem Lengths	(see drawing below)	(see drawing below)	(see drawing below)	(see drawing below)
Voltage	90 to 130 VAC, 50/60 Hz	90 to 130 VAC, 50/60 Hz	90 to 130 VAC, 50/60 Hz	90 to 130 VAC, 50/60 Hz
Power	25 Watts	45 Watts	45 Watts	25 Watts
Weight	9.2 lbs.	8.9 lbs.	8.9 lbs.	9.2 lbs.
Housing Material	Stainless Steel 304SS	Stainless Steel 304SS	Stainless Steel 304SS	Stainless Steel 304SS
Size	3-1/16" H x 6-5/8" W x 10-7/8" D (78 mm x 168 x 276 mm)	3-1/16" H x 6-5/8" W x 10-7/8" D (78 mm x 168 x 276 mm)	3-1/16" H x 6-5/8" W x 10-7/8" D (78 mm x 168 x 276 mm)	3-1/16" H x 6-5/8" W x 10-7/8" D (78 mm x 168 x 276 mm)

* **HIGH TO LOW** or **LOW TO HIGH** takes approximately 5 minutes.

NOTE: Custom hole diameters and custom temperature points available--Consult Factory

EACH CHECK-TEMP INCLUDES:

ALL Models Include:

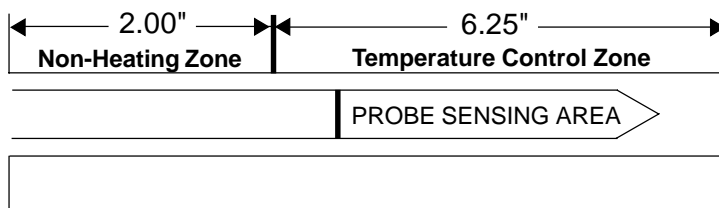
- Certificate of Calibration
- Dial adjustment tool
- Cleaning brush
- Operating instructions
- **FREE GIFT**--BT275R Tel-Tru thermometer

Check-Temp II M and 40 M Models Also Include:

- Tip Sensitive Probe Adapter
- Two cleaning brushes--one for the .125" diameter and one for the .250", .187", and .375" opening.

FOR ACCURATE READING:

Sensing area of the thermometer probe **MUST BE** inserted completely into the **TEMPERATURE CONTROL ZONE** of the Check-Temp Calibrator.

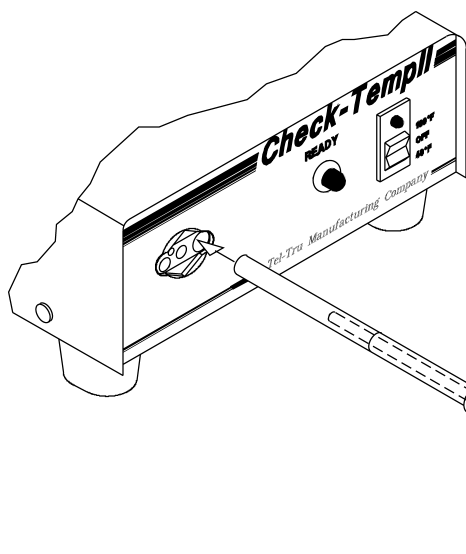


OPTIONS & ACCESSORIES

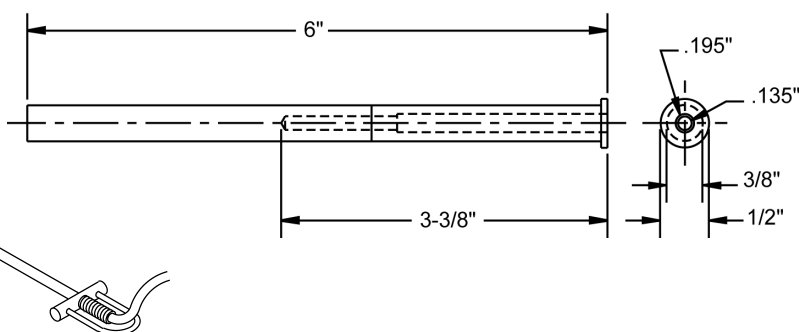
PART NUMBER

- **Carrying Case** Padded Nylon Cordura® 96100046 \$55.00 each
- **Dial Adjustment Tool** for 1" and 2" Thermometers (set of 3) 96100055 \$16.00 (per set)
- **Cleaning Brush** for Check-Temp 140 and 160 (set of 3) 96100054 \$12.00 (per set)
- **Cleaning Brush** for Check-Temp II M and 40 M (set of 2) 96100145 \$12.00 (per set)
- **Tip Sensitive Probe Adapter** for Check-Temp II M and 40 M 96100139 \$44.00 each

Check-Temp II M and 40 M Tip Sensitive Probe Adapter - Fits 3/8" diameter hole of Check-Temp 40 M and Check-Temp II M. The probe adapter sleeve is to be used when calibrating electronic probes. Use with probes 3-3/8" minimum length or greater and 3/16" maximum OD or smaller. When adapter is used Check-Temp accuracy is $\pm 1\%$.



ADAPTER DIMENSIONS



CALIBRATION SERVICES

Annual Re-certification & Maintenance Notification Service \$115.00 (net) each unit/per year
Reference part number 96100081

Service Provided:

- Owner **MUST COMPLETE** and **RETURN** warranty registration card when unit is purchased.
- Two weeks prior to the re-certification due date, Tel-Tru will send the Check-Temp owner a notification letter to advise that re-certification and maintenance of unit is due.
- Customer carefully packs up unit(s) and ships to the Tel-Tru factory (as instructed in notification letter).
- Check-Temp Calibrator(s) are thoroughly inspected and cleaned.
- Check-Temp Calibrator(s) are accuracy tested and re-certified.
- Warranty is extended one additional year.
- Unit(s) returned to customer FOB Rochester NY (returned UPS Ground, unless customer advises differently). Outside continental USA requires freight quote.
- One week turnaround for re-certification and maintenance (from receipt of unit by Tel-Tru).

Download product catalogs from our website
www.teltru.com



Tel-Tru Manufacturing Company
408 St. Paul Street, Rochester, NY 14605
PO Box 30144, Rochester, NY 14603-3144

F.O.B. Rochester, NY
USA
Prices subject to change

Phone: 800-232-5335 • 585-232-1440
Fax: 585-232-3857
E-mail: info@teltru.com • Web: www.teltru.com