



**TEL-TRU
MANUFACTURING CO.**

World-Class Thermometers

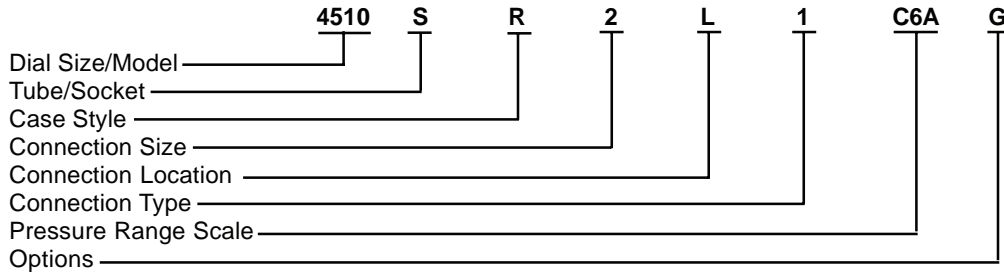
Thermometers • Pressure Gauges • Transmitters • Accessory Products

**Price List PGP-07
Effective 10/1/07**

PRESSURE GAUGES

FOR COMPLETE HOW TO ORDER INSTRUCTIONS SEE OUR PRESSURE GAUGE BROCHURE

HOW TO SPECIFY A COMPLETE PRESSURE GAUGE MODEL NUMBER:



HOW TO ORDER EXAMPLE:

Select Specs: 4-1/2", Model 10, 316SS, 1/2" Lower, NPT, 0-30 psi, Glycerine Fill

	Dial/Model	Tube/Socket	Case Style	Conn. Size	Conn. Location	Conn. Type	Range	Option
Code =	45 10	S	R	2	L	1	C6A	G

Ordering Format = 4510SR2L1C6AG

MODEL 10 SOLID FRONT PROCESS PRESSURE GAUGES			
4-1/2" CASE CODE	RANGE (PSI)	10S 316SS LOWER	10M MONEL LOWER
R = (Polypropylene)	15 - 800	\$122.76	Req. Quote
	1,000 to 6,000, Receiver 3-15	\$136.40	Req. Quote
	VAC	\$153.76	Req. Quote
	Compound, 10,000 to 15,000 Ammonia	\$172.36	Req. Quote
T = (Phenolic)	15 - 800	\$155.00	Req. Quote
	1,000 to 6,000, Receiver 3-15	\$168.64	Req. Quote
	VAC	\$186.00	Req. Quote
	Compound, 10,000 to 15,000 Ammonia	\$250.48	Req. Quote
OPTIONS			
Glycerine Fill		\$18.60	\$18.60
Silicone Fill		\$37.20	\$37.20
Tagging 304 Stainless Steel		\$8.68	\$8.68
Acrylic Lens		\$9.92	\$9.92
Restrictor		\$11.16	\$17.36
Special Ranges		Req. Quote	Req. Quote
Calibration Certificate		Req. Quote	Req. Quote
Oxygen Clean		Req. Quote	Req. Quote

Pressure Gauges and Accessory Products
Tel-Tru offers a complete line of rugged and dependable pressure and temperature products for all your process applications needs.

MODEL 30 1% STAINLESS STEEL PRESSURE GAUGE							
MODEL	RANGE (PSI)	2-1/2"		4"		6"	
		LOWER	BACK	LOWER	BACK	LOWER	BACK
30S 316SS DRY	15 - 1,000	\$79.36	\$85.56	\$97.96	\$135.16	\$128.96	\$143.84
	VAC., 1,500 - 6,000	\$90.52	\$99.20	\$107.88	\$145.08	\$145.08	\$159.96
	Comp.	\$96.72	\$102.92	\$128.96	\$166.16	\$156.24	\$168.64
	10,000	\$106.64	\$114.08	\$147.56	\$184.76	\$167.40	\$181.04
	15,000	-	-	\$183.52	\$220.72	\$202.12	\$217.00
30M Monel DRY	15 - 1,000	\$192.20	\$198.40	\$257.92	\$282.72	\$287.68	\$331.08
	VAC., Comp., 1,500 - 6,000	\$296.36	\$303.80	\$276.52	\$301.32	\$297.60	\$342.24
	10,000	\$370.76	\$376.96	-	-	-	-
OPTIONS							
Glycerine		\$6.20	\$6.20	\$14.88	\$14.88	\$31.00	\$31.00
Silicone		\$12.40	\$12.40	\$31.00	\$31.00	\$55.80	\$55.80
Back Flange		\$17.36	-	\$24.80	-	\$24.80	\$24.80
Front Flange		-	\$14.88	-	\$31.00	-	\$31.00
U-Clamp		-	\$12.40	-	\$24.80	-	-
Restrictor		Req. Quote	Req. Quote	Req. Quote	Req. Quote	Req. Quote	Req. Quote
Tagging 304 Stainless Steel		\$8.68	\$8.68	\$8.68	\$8.68	\$8.68	\$8.68
Special Ranges		Req. Quote	Req. Quote	Req. Quote	Req. Quote	Req. Quote	Req. Quote
Drag Pointer (dry only/30 psi or higher)		-	-	Req. Quote	Req. Quote	-	-
Oxygen Clean		Req. Quote	Req. Quote	Req. Quote	Req. Quote	Req. Quote	Req. Quote
Acrylic Lens		-	-	\$9.92	\$9.92	-	-

MODEL 31 1% SOLID FRONT STAINLESS STEEL PRESSURE GAUGE DRY OR LIQUID FILLED		
MODEL	RANGE (PSI)	4" LOWER
31S 316SS DRY	15 - 600	\$161.20
	Comp., 1,000 - 6,000	\$169.88
	VAC., 10,000 - 15,000	\$187.24
31M Monel DRY	15 - 600	\$285.20
	Comp., 1,000 - 6,000	\$349.68
	VAC., 10,000	\$376.96
OPTIONS		
Glycerine		\$14.88
Silicone		\$31.00
Back Flange		\$39.68
Restrictor 316SS		Req. Quote
Tagging 304 Stainless Steel		\$8.68
Special Ranges		Req. Quote
Oxygen Clean		Req. Quote



Tel-Tru Manufacturing Company
 408 St. Paul Street, Rochester, New York 14605 USA
 Phone: 585.232.1440 • 800.232.5335 • Fax: 585.232.3857 • E-mail: info@teltru.com • Web: www.teltru.com

MODEL 32 1-1/2" ALL STAINLESS STEEL PRESSURE GAUGE DRY OR LIQUID FILLED		
MODEL	RANGE (PSI)	2-1/2" LOWER
32 316SS	VAC., 15 - 600	\$42.12
	Compound	\$49.68
	1,000 to 6,000	\$50.76
	10,000	\$60.46
OPTIONS		
Glycerine Fill		\$5.40
Silicone Fill		\$10.80
Restrictor 316SS		\$9.72
Oxygen Clean		Req. Quote

MODEL 33 INDUSTRIAL/HYDRAULIC PRESSURE GAUGES DRY OR LIQUID FILL									
MODEL	RANGE (PSI)	1-1/2"		2"		2-1/2"		4"	
		LOWER	BACK	LOWER	BACK	LOWER	BACK	LOWER	BACK
33B Brass	Comp., VAC 15-600	\$13.23	\$15.39	\$15.39	\$17.82	\$16.74	\$20.25	\$45.09	
	1,000 - 5,000	\$15.39	\$17.82	\$17.82	\$20.25	\$18.90	\$22.68	\$47.52	
33S 316SS	Comp., VAC 15-600	\$26.73	\$29.16	\$30.24	\$32.67	\$34.02	\$36.18	\$64.80	
	1,000 - 5,000	\$29.16	\$31.32	\$32.67	\$35.10	\$36.18	\$38.61	\$69.39	
	10,000	-	-	-	-	\$42.12	\$44.55	\$76.68	
OPTIONS									
Glycerine		\$4.32	\$4.32	\$4.32	\$4.32	\$5.40	\$5.40	\$8.64	
Silicone		\$8.64	\$8.64	\$8.64	\$8.64	\$10.80	\$10.80	\$21.60	
*Front Flange		-	\$6.48	-	\$6.48	-	\$6.48	-	
**U-Clamp		-	-	-	-	-	\$9.18	-	

* Front Flange available separately as back mount only. When ordering specify part number 1-1/2" = 95-1726, 2" = 95-1727, and 2-1/2" = 95-1728

** U-clamp on 2-1/2" dial is sold separately. Order part number 95-1701

Pressure Gauges and Accessory Products
Tel-Tru offers a complete line of rugged and dependable pressure and temperature products for all your process applications needs.

MODEL 37 1-1/2% LOW PRESSURE GAUGES				
MODEL	RANGE	4"		4"
		LOWER	BACK	
37S 316SS	IW, PSI	\$367.04	\$385.64	
	Compound	\$529.48	\$548.08	
	VAC	\$570.40	\$589.00	
OPTIONS				
Back Flange		\$24.80	\$24.80	
Front Flange		-	\$31.00	
U-Clamp		-	\$31.00	

MODEL 42 1/4% TEST PRESSURE GAUGES				
MODEL	RANGE (PSI)	6"		6"
		LOWER	BACK	
42 316SS	15 - 1,000	\$468.72	\$487.32	
	VAC., 1,500 - 6,000	\$549.32	\$567.92	
	Comp., 10,000 to 15,000	\$642.32	\$660.92	
OPTIONS				
Back Flange		\$31.00	\$31.00	
Front Flange		-	Req. Quote	
Restrictor 316SS		\$11.16	\$11.16	
Oxygen Cleaning		Req. Quote	Req. Quote	
Calibration Certificate		Req. Quote	Req. Quote	

MODEL 50 METAL CASE UTILITY PRESSURE GAUGES									
MODEL	RANGE	1-1/2"		2"		2-1/2"		3-1/2"	
		LOWER	BACK	LOWER	BACK	LOWER	BACK	LOWER	BACK
50 Brass	VAC., Comp 15	\$14.04	\$15.12	\$15.12	\$16.20	\$17.28	\$18.36	\$25.92	
	30 - 600	\$12.96	\$14.04	\$14.04	\$15.12	\$16.20	\$17.28	\$24.84	
OPTIONS									
Oxygen Cleaning		Req. Quote	Req. Quote	Req. Quote	Req. Quote	Req. Quote	Req. Quote	Req. Quote	Req. Quote



Tel-Tru Manufacturing Company
 408 St. Paul Street, Rochester, New York 14605 USA
 Phone: 585.232.1440 • 800.232.5335 • Fax: 585.232.3857 • E-mail: info@teltru.com • Web: www.teltru.com

MODEL 51 PLASTIC CASE UTILITY PRESSURE GAUGES

MODEL	RANGE (PSI)	1-1/2"		2"	
		BACK	LOWER	BACK	BACK
51	Comp., 30, 60, 100	\$11.88	\$11.88	\$11.88	\$11.88

MODEL 52 MECHANICAL CONTRACTOR PRESSURE GAUGES

MODEL	RANGE (PSI)	4-1/2"	
		LOWER	BACK
52	Comp., VAC - 600	\$42.93	

MODEL 55 LOW PRESSURE DIAPHRAGM ACTUATED UTILITY PRESSURE GAUGES

MODEL	RANGE	2-1/2"	
		LOWER	BACK
55	All	\$52.38	\$55.89
OPTIONS			
	Oxygen Cleaning	Req. Quote	Req. Quote

Pressure Gauges and Accessory Products
Tel-Tru offers a complete line of rugged and dependable pressure and temperature products for all your process applications needs.

DIAPHRAGM SEALS												
MODEL TYPE	MAX. PRESS.	PROCESS CONN.	CONN. TYPE	WETTED MATERIALS LOWER HOUSING/DIAPHRAGM			STD. GASKET	STD. UPPER HSE.	SPECIFY INST. NPT CONN.	STD. BOLTS STEEL	OPTIONAL UPPER HSE. 316LSS W/ 304SS BOLTS adders	
				316LSS /316L CODE SS	MONEL /TANT. CODE JT	HAST. - C /HAST. - C CODE EE						
W WELDED OFF LINE												
THREADED W10							C4401 CODE K	Carbon Steel CODE B	CODE 1=1/4" 3=1/2"	Carbon Steel CODE 1		
W10												
W11	w/1/4" NPT Flush Conn. Add to W106											
W11	w/1/4" NPT Flush Conn. Add to W107											
FLANGED W259	ANSI											
W269	w/1/4" NPT Flush Conn. Add to W259											

Note POR = Price On Request

* **RF - Raised Face** - Other Face Styles and Pressure Ratings Available POR

• When ordering Diaphragm Seals assembled with pressure gauge fill fluid must be selected, see page 8 for options.

• **OTHER CONFIGURATIONS AND MATERIALS AVAILABLE UPON REQUEST**



Tel-Tru Manufacturing Company

408 St. Paul Street, Rochester, New York 14605 USA

Phone: 585.232.1440 • 800.232.5335 • Fax: 585.232.3857 • E-mail: info@teltru.com • Web: www.teltru.com

DIAPHRAGM SEALS												
MODEL TYPE	MAX. PRESS.	PROCESS CONN.	CONN. TYPE	WETTED MATERIALS LOWER HOUSING/DIAPHRAGM			STD. GASKET	STD. UPPER HSE.	SPECIFY INST. NPT CONN.	STD. BOLTS STEEL	OPTIONAL adders UPPER HSE. 316LSS W/ 304SS BOLTS	
				316LSS /316L	MONEL /TANT.	HAST. - C /HAST. - C						CODE SS
W WELDED IN LINE FLOW THROUGH												
W455 SADDLE WELD	1500#	9 = 3"	3=Pipe				C4401 CODE K	Carbon Steel CODE B	CODE 1=1/4" 3=1/2"	Carbon Steel CODE 1		
W405 SOCKET WELD	1500#	4 = 3/4" 5 = 1" 7 =1-1/2" 8 = 2"	3=Pipe									
W505 BUTT WELD	1500#	4 = 3/4" 5 = 1" 7 =1-1/2" 8 = 2"	3=Pipe									
W519 FLANGED	ANSI	5 = 1" 8 = 2" 9 = 3"	A=150# * A=150# A=150#									
W355 THREADED	1500#	1 = 1/4" 3 = 1/2" 4 = 3/4" 5 = 1"	3=Pipe									
*RF - Raised Face - Other Face Styles and Pressure Ratings Available POR (price on request)												
M MINI												
THREADED M10A	1000#	1 = 1/4" 3 = 1/2" 4 = 3/4" 5 = 1"	1=NPT					R= 316SS	CODE 1=1/4" 3=1/2"			
M10B	2000#	1 = 1/4" 3 = 1/2"										
M107	5000#	1 = 1/4" 3 = 1/2"										
M11A, M11B	w/1/4" NPT Flush Conn. Add to M10A, M10B											
Low Volume Type Available 2000# psi Only - POR (price on request)												
S SANITARY												
S703 TRI-CLAMP	600#	7 =1-1/2" 8 = 2" 9 = 3"	2= Sanitary									
S723 CHERRY BURRELL "I LINE"	600#	8 = 2" 9 = 3"										
S733 APC CLAMP	600#	8 = 2" 9 = 3"										

Pressure Gauges and Accessory Products
Tel-Tru offers a complete line of rugged and dependable pressure and temperature products for all your process applications needs.

DIAPHRAGM SEAL FILLING OPTIONS

MATERIAL	TEMPERATURE RANGE	PART #	LIST PRICE
Glycerine (Food Grade)	+30 to +300°F (-1 to 149°C)	Assembly-G	\$35.00
Silicone Oil, 350C (Food Grade)	-55 to 500°F (-48 to 260°C)	Assembly-S350	\$35.00
* Fluorolube	-40 to 500°F (-40 to 260°C)	Assembly-FS-5	Req. Quote
Neobee M-20	0 to 400°F (0 to 200°C)	Assembly-NM20	Req. Quote
None	N/A	0	N/A

* **Fluorolube FS-5 DO NOT** use in contact with aluminum or magnesium.

Note: Low Pressure (<15 psi) gauge/seal assembly--Request Quote.

OPTIONAL MATERIALS FOR DIAPHRAGMS

MODEL	S=316L	P=304L	J=MONEL	F=INCONEL	K=NICKEL	T=TANTALUM	C=CARP 20
W Welded	-					-	
M Mini	-	-				-	-
S Sanitary	-					-	-

- Add to List Price of Standard Diaphragm Seal Selected

OPTIONAL MATERIALS

MODEL	DIAPHRAGMS		O-RING	GASKETS		
	E=HASTELLOY-C	B=HASTELLOY-B	T=TEFLON	B=BUNA-N	V=VITON	G=GRAFOIL
W Welded						
M Mini						
S Sanitary	-	-		-	-	-

- Add to List Price of Standard Diaphragm Seal Selected
- When ordering Diaphragm Seals assembled with pressure gauge fill material must be selected, see top of this page for options
- **OTHER CONFIGURATIONS AND MATERIALS AVAILABLE UPON REQUEST**



Tel-Tru Manufacturing Company
 408 St. Paul Street, Rochester, New York 14605 USA
 Phone: 585.232.1440 • 800.232.5335 • Fax: 585.232.3857 • E-mail: info@teltru.com • Web: www.teltru.com

POROUS METAL & PISTON TYPE PRESSURE SNUBBERS

FOR PRICING SEE:
 Porous Metal Snubber see price sheet part # RPSP-07
 Piston Type Pressure Snubber see price sheet part # RPSP-07

STEAM GAUGE SIPHONS

SIZE	TYPE	MATERIAL	PART NUMBER	LIST PRICE
1/4" NPT	Sch. 40 Welded	Steel A120	21AS	\$4.32
1/4" NPT	Sch. 40 Seamless	Steel A106B	21SS	\$9.72
1/4" NPT	Sch. 40	304SS	214S	\$21.60
1/4" NPT	Sch. 40	316SS	216S	\$25.92
1/4" NPT	Sch. 80 Seamless	Steel A106	21SX	\$11.88
1/4" NPT	Sch. 80	304SS	214X	\$35.64
1/4" NPT	Sch. 80	316SS	216X	\$45.36
SIZE	TYPE	MATERIAL	PART NUMBER	LIST PRICE
1/2" NPT	Sch. 40	Steel A106B	51SS	\$22.68
1/2" NPT	Sch. 40	304SS	514S	\$47.52
1/2" NPT	Sch. 40	316SS	516S	\$63.72
1/2" NPT	Sch. 80 Seamless	Steel A106B	51SX	\$24.84
1/2" NPT	Sch. 80	304SS	514X	\$84.24
1/2" NPT	Sch. 80	316SS	516X	\$115.56

BRASS GAUGE COCKS

TYPE	SIZE	MATERIAL	PART NUMBER	LIST PRICE
Tee Handle	1/4" NPT F x F	Brass	GC38	\$7.56
Lever Handle	1/4" NPT F x F	Brass	GC44	\$8.64
Lever Handle	1/2" NPT F x F	Brass	GC45A	\$11.88

NEEDLE VALVES

PART NUMBER	CONNECTION	MATERIAL	LIST PRICE
T412	1/4" NPT F x F	Steel	\$34.56
T414	1/2" NPT F x F	Steel	\$36.72
T416	1/4" NPT M x F	Steel	\$38.88
T418	1/2" NPT M x F	Steel	\$41.04
T422	1/4" NPT F x F	Stainless Steel	\$77.76
T424	1/2" NPT F x F	Stainless Steel	\$91.80
T426	1/4" NPT M x F	Stainless Steel	\$96.12
T428	1/2" NPT M x F	Stainless Steel	\$104.76



ADDITIONAL PRODUCTS AVAILABLE FROM
TEL-TRU

Bimetal Thermometers

•

Sanitary Bimetal Thermometers

•

Glow Dial and Reflective Thermometers

•

Gas Actuated Thermometers

•

DIGI-TEL Digital Thermometers

•

DIGI-TEL Sanitary Thermometers

•

DIGI-TEL Temperature Transmitters

•

Vapor Tension Thermometers

•

Thermowells

•

Surface Thermometers

•

Vapor Tension Thermometers

•

Glass Industrial Thermometers

•

Pressure Transmitters

•

Non-Contact Infrared Thermometers

•

Calibrators



Tel-Tru Manufacturing Company
408 St. Paul Street, Rochester, NY 14605 USA

Phone: 800.232.5335 • 585.232.1440 • Fax: 585.232.3857 • E-mail: info@teltru.com • Web: www.teltru.com
Effective Date: 10/1/07

Part Number PGP-07