

## TIME IT

Copyright © 1996 Sper Scientific Ltd.

### Make your computer the Mother of all Timers

TIME IT is a revolutionary concept in timing and represents the future of laboratory timing for most applications. Using the power of your computer TIME IT produces timers that are larger, louder, clearer and which offer more functions than any timer you've seen before. Begin with a single timer and get digits many times larger and clearer than any normal timer's LCD. Choose another timer, stopwatch, or clock and your screen automatically divides into 2 large displays. Continue to add timers stopwatches or a clock and time up to 8 different events simultaneously. View all 8 on screen at the same time, something not possible with any normal timer. TIME IT has every function available on any timer or stopwatch, plus many additional functions and advantages not found on standard timers including:



## LARGER DISPLAY

Using TIME IT in a single timer mode on a standard 14" computer gives you a timer with digits  $2\frac{3}{8}$ " high. Larger than digits on any normal timer and much brighter and clearer than any ordinary timer's LCD. Easily seen by an entire classroom or lab, as well as in the dark. In addition each timer's digits are a different color so they can be identified at a glance. Timers can be labeled directly on the screen with your corresponding test name.



NEC MultiSync 4FGc



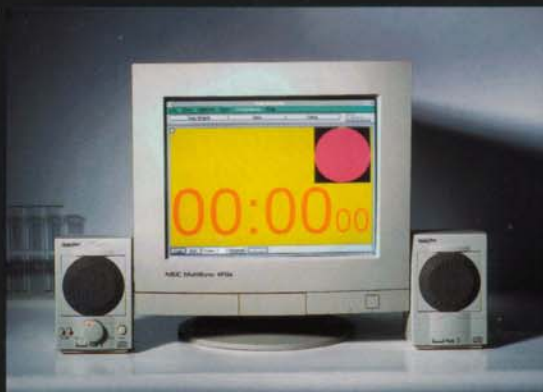
NEC MultiSync 4FGc



NEC MultiSync 4FGc

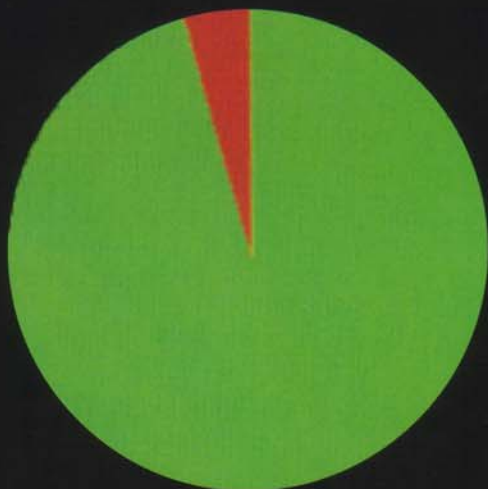
## DISPLAYS MULTIPLE TIMERS AT MAXIMUM SIZE

As timers are added and subtracted the screen automatically splits to accommodate them always maximizing their size. Even when viewing 8 timers simultaneously their digits will be larger than those of most ordinary timers as well as brighter and easier to see at a distance.



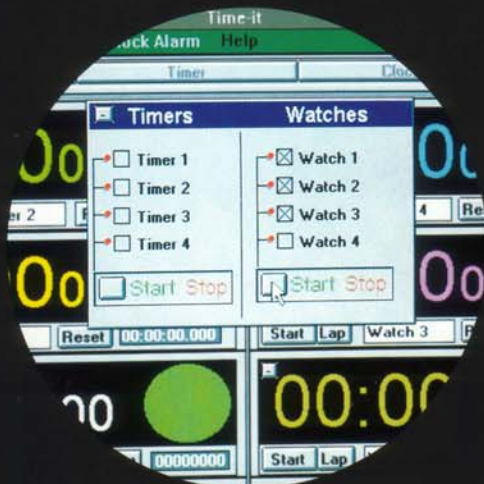
### AUDIBLE AND/OR VISUAL ALARMS

For some applications such as observational research you might choose a silent visual alarm only. For others you may want visual and audible alarms. The choice is yours. Use TIME IT together with a sound card and you'll get a loud audible alarm that will be heard over even the noisiest equipment.



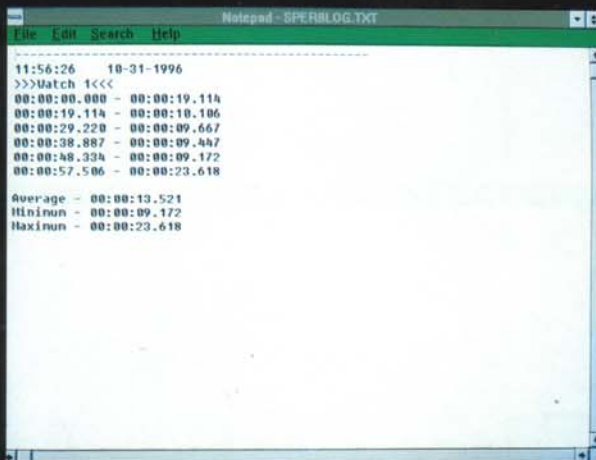
### UNIQUE VISUAL DISPLAY OF TIME

A glance at the time pie indicates approximately what percentage of your original timer setting has elapsed (green), and what percentage remains (red).



### SYNCHRONOUS START

Synchronize up to eight timers to begin at a single mouse click, something impossible to do even with multichannel standard timers.



## DATA LOGGING

TIME IT's stopwatch records each lap. The 5 most recent laps are displayed on screen but all lap times can be recalled later with the total number limited only by hard disk space.



## STATISTICAL ANALYSIS

TIME IT automatically calculates minimum, maximum, and average lap times for you.



## SIMPLE USER INTERFACE

Despite the sophistication of its functions TIME IT is no more difficult to use than a standard timer, in fact its' easier to program than many of them. No special computer skills are required outside of the normal use of a mouse. To begin a stopwatch for example, simply bring the cursor to the start button and click.

## SYSTEM REQUIREMENTS

Operates on Windows 3.11 or Windows 95, 386 DX 40 MHz with 387 math coprocessor, 486DX2 66 MHz, or better with a minimum of 4 megs system ram, 1 MB hard disk space, 256K video ram, PC ISA architecture.

*Windows 3.1 and Windows 95 are trademarks of Microsoft Corporation.*